

Views from the Hill

NEWSLETTER OF THE TEWKESBURY LODGE ESTATE RESIDENTS' ASSOCIATION Summer 2022



City Airport Capacity increase

Many residents will be aware of London City Airport's concentrated flight path low over Forest Hill - with aircraft flying at under 2000 feet, noise disturbance is increased. The airport is currently allowed up to 45 aircraft movements per hour when open but already has permission to increase the current 50,000 annually to 111,000. This is more than double current levels, and a 38% increase on pre-pandemic levels.

There is a 24-hour period at weekends when they are not allowed to fly to help protect Londoners from the noise and emissions. However, City now say that the best way they can expand to meet leisure flying demand is the introduction of bigger and more efficient new generation planes, and to fly on Saturday afternoons and evenings too. This would create a huge disturbance on Saturdays over our homes and gardens and leave only a few hours on Sunday when there would be no permitted flying. They also say that only the newer planes would fly in these extended periods and that they are quieter. But measurements by the airport's own noise consultants show that this is only really the case close to the airport when taking off or landing. Over Forest Hill, most people will not be able to hear a difference. And City refuses to complete its current project to introduce new flight paths with higher flying



and alternating routes before putting in this new planning application.

London City Airport is holding a consultation on how it will expand operations over the next 10 years. For these reasons, the Residents Association will be objecting to the Saturday flying, and the ending of the 24hour break.

The consultation period ends on 9 September 2022 if you would also like to object. There is a feedback form headed Your Opinion Matters on their consultation website <https://consultation.londoncityairport.com>

Advice on completing the form can be found at <http://www.hacaneast.org.uk/news>

*Don't like noise and pollution from air traffic...?
Get involved!*

Upcoming Events

Annual General Meeting – Tuesday 6 September at 6.30pm

All residents are invited to our 60th Annual General Meeting to be held at Horniman Primary School on the evening of Tuesday 6 September. We are delighted that we will be joined by Councillor Sophie Davis. She will talk about recent changes in planning regulations and how these impact our local environment. Our co-chair Stuart Checkley will also bring us up to date with 50 recent tree plantings in our immediate area. Do come along to find out more. Wine and light refreshments will be served from 6.00pm.

Stop press

TLERA is delighted to announce that it has



been awarded a grant of £7,800 by the Lottery Fund to install planters along our section of the Green Chain Walk. A huge thanks to Ruth Campbell for pioneering this project.

continued on next page...

Malus Rudolph

Inside this issue:

City Airport:	1
Events:	1
Easter on the hill:	2
Jubilee Party:	2
Horniman Triangle:	3
Garden Opening:	3
Environment:	3
Committee Changes:	4
Committee:	4

continued from previous page...



Autumn Harvest Lunch and Apple Pressing – Saturday 8 October 1-4pm

The popular Autumn Harvest lunch and Apple Pressing is back for 2022 and will once again be held at Hilltop, 28 Horniman Drive. It is free to members and is great family fun. Bring

along your own apples to take part in the traditional pressing and take away bottles of freshly made juice. There are additional activities for children and a delicious lunch is provided with homemade seasonal soups and an interesting selection of cakes. See you there!

Later in the year – Carols by Candlelight
Although it is far too soon to talk about Christmas, rest assured that the Carols by Candlelight will take place in December. Date to be confirmed.

It's important to make your own Easter cards, but it's even more important to look cool...

Easter on the Hill

Lots of fun was had by all at the Easter egg hunt in the garden at Hilltop this year - even the weather was sunny side up. The best efforts of the Easter bunny to hide the eggs were no match for the eagle-eyed children who were able to spot the chocolates in a flash and fill their baskets. Then there was a chance for more prizes with the jar of eggs to count and the



bonnets to parade; some children also coloured cards to take home. A beautiful Simnel cake had pride of place on the refreshment stand with many other delicious cakes to sample with a cuppa. A very enjoyable family event and over £200 raised for Demelza Childrens Hospice.

Tina Hildrey

Hold on, aren't those meant to be corks?

Jubilee Street Party

A once in a lifetime event: four policemen visited the Hill! It also happened to coincide with the Queen's Platinum Jubilee! For a month or two the Whatsapp groups on the Hill had been buzzing with 'Should we/shouldn't we



celebrate the Jubilee?' posts. But even the most diehard republicans agreed that we must take our hats off to the Queen, who has done an amazing job for 70 years and deserves our respect. Plus it was a great opportunity at last

Hello, hello, hello, what've we got 'ere then, ey?---

to meet up with neighbours after two years of pandemic social distancing.

Lots of people sprang into action, planning vintage songs, games, bunting and Platinum Punch. There was Dancing in the Street, hippies running Three Legged Races, a photo booth for

all to pose as the Queen - and all sorts of other fun and celebration.

It was a really special TLERA event, and one to remember for the children, who were all given Jubilee pencils with certificates for vintage games winners.

Frankie Locke

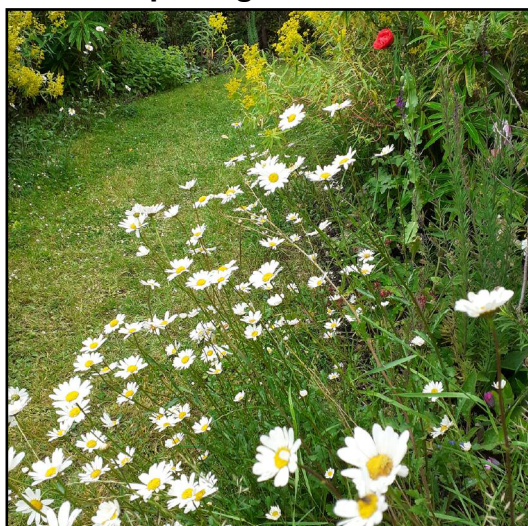
Horniman Triangle (Play Park) Tree Walk

On a beautiful afternoon in May, a group of us joined Stuart Checkley in the Horniman Triangle (the park opposite the Horniman Museum) to see and hear about the new native trees planted by Street Trees for Living (STfL) in conjunction with the Council and with the support of local residents (our members raised funds for one of the trees). It was fantastic to see that an impressive 41 native trees and 20 saplings have now been planted. Stuart was an

enthusiastic and very informative guide who opened our eyes to the wide-reaching and long-term benefits of the project, including protecting the children's playground from South Circular traffic pollution. The park has always been one of our important green spaces but even more so now and it is a beautiful spot for a summer picnic and quiet tree contemplation!

Tina Hildrey

National Garden Scheme (NGS) Garden opening



On June 5th, five Garden Group members opened again for the National Garden Scheme (NGS), the £2607 raised being sent to the NGS to distribute to cancer and caring charities. Alice Hutton, a member of our Garden Group, opened her garden for the first time, and writes:

I was a first-time rookie Garden Opener. At 12.45 on 5th June the drizzly rain stopped. At

13.00 I opened the side gate to welcome my first visitors – just as the sky brightened! Not knowing in advance what exactly would be in flower or at its best, I was lucky the garden smiled, having enough going on to hold interest. Bunty (who lived nearby helped magnificently) and we did not stop till the gate was closed at 18.00. We enjoyed the comings and goings of lovely, curious people leaving comments that were really encouraging, with one gardener coming back for a second look around!

As a long time visitor to NGS gardens around London (and in the past few years a helper of other garden openers), I was asked to step in as two other gardens were unable to open this year, so decided to give it a try. Being part of a group of garden openers helps, as visitors see and experience a range of very different garden styles in one afternoon. All the monies collected go to charity so whatever happens you know it is all for a good cause and worth every bit of effort.

Alice Hutton

Footnote: And next year both Alice and Bunty will be opening their gardens!

Threats to our environment and what we can do about them

As seen from any aerial photograph, our Estate is still a wooded hill much more than it is a built hill. Our trees bring us the benefits of cleaner, cooler air and wildlife. They connect us to the two largest fragments of the former Great North Wood, so we have a wooded wildlife corridor through many of our gardens from Sydenham Wood to One Tree Hill. Through that corridor we receive all the wildlife

that we share on our Facebook Page - most recently the eruption of Stag Beetles and the arrival of Jersey Hawk Moths.

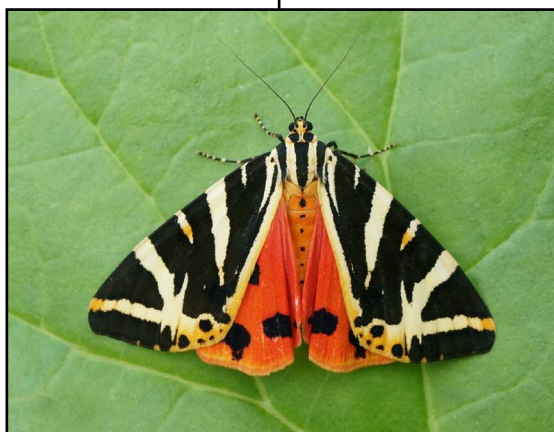
But our natural environment is on the retreat. Gone are the hedgehogs and, apart from an occasional visitor in winter, gone are the Tawny Owls. Ten years ago this newsletter reported as

continued on next page...



*Come down with your
leaves in the air Mr:
Poppy, you are
surrounded.*

continued from previous page...



*Euplagia
quadripunctaria*

many as 50 bumble bees in a single garden and also in the Horniman Gardens but today you would be lucky to see 10. The song of thrushes (both Mistle and Song) has all but disappeared from the Hill, and although blackbirds still sing, their young rarely survive.

water street trees. We have planted 50 so far and we will plant 10 more next winter, and have also contributed to the planting of 40 trees on the nearby Horniman Triangle. These are both significant advances. The Association has, and will continue to, oppose all developments which destroy green spaces whether these be in individual gardens or other green spaces such as the Telecom and Reservoir sites. However, planning regulations are being changed, and this may expose us to more threats from developers. Come to our AGM to find out what we are doing to enhance our natural environment and how you might get involved.

Stuart Checkley

What can TLERA do to protect our green environment? We can and do both plant and

Committee Changes

I would like to take this opportunity to record our huge thanks to several stalwarts of the Committee who are stepping down this summer, taking a well earned rest after tramping the streets delivering newsletters and flyers for several years: Gabriel and Linda Porras (road reps for Westwood Park); and Michael Levin (also a Westwood Park road rep as well as a lead on the built environment). In addition, we say goodbye to Dave Leslie (transport,

events and environmental campaigns) who is leaving the area. Dave has been a very active member of the Committee on many issues recently but was also heavily involved in the successful 2003 campaign to ensure decommissioning of the high-powered equipment on the police mast on Horniman Drive. We are enormously grateful for their considerable contribution to the Association.

Valerie Ward.

Committee List

Officers

Valerie Ward	Chair	8699 8432
Stuart Checkley	Co-Chair	07709 578417
Kate Morris	Treasurer	07791 202350
Tina Hildrey	General Secretary	8699 6039
Carole Abrahams	Membership Secretary	8291 1312

Road Representatives

Representing

Beatrice Jackson	2-70 Canonbie Road (even numbers)	8699 7143
Paul Ewan	1-81 Canonbie Road (odd numbers)	07855 946311
Nano McCaughan	Barr Beacon, Canonbie Road	8699 8438
Mary Bayliss	83-105 and 72-120 Canonbie Road	8699 8175
Rose Agnew	1-63 and 2-36 Horniman Drive	8699 7710
Christine Martyn	65-77 and 50-70 Horniman Drive, Amroth Close, Cleeve Hill	8699 3010
Tony and Maria Branchini	Liphook & Rocombe Crescents	8699 3078
Alice Hutton	Netherby Road and Sydmonds Court	8699 4931
Valerie Ward	Ringmore Rise	8699 8432
Alison Welch	Tewkesbury Avenue	07919 182135
Jim Hyett	1-15d and 2-20d Westwood Park, The Hermitage	8699 4322
Vacancy	22-76 Westwood Park (even numbers)	---
Rita Zarvou	15e-87 Westwood Park (odd numbers)	8699 2429
Jacqueline & Alan Priestley	78-114 & 89-125 Westwood Park)	3605 5017
Vacancy	127-163 & 116-134 Westwood Park.	---
	Langton Rise/Moonlight Walk	

This newsletter was compiled and edited by Valerie Ward, and proof read by Tina Hildrey. Design and layout by Michael Schlingmann. Contributions from members are very welcome and can be e-mailed to us at secretary@tewkesburylodge.org.uk